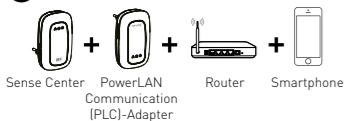
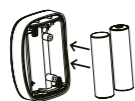


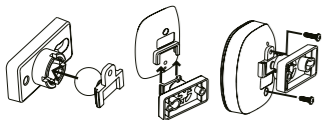
1 Sie benötigen: **2 Zwei AA-Batterien einsetzen**



Sense Center PowerLAN Communication (PLC)-Adapter Router Smartphone

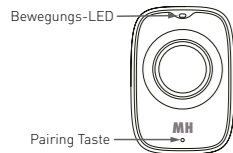


3 Halterung montieren und anschrauben. **4 Funk-Taste auf der Zentrale drücken.**



Verbindung besteht, wenn die LED des maxSMART Motion Sense zu blinken aufhört.

5 LED- und Tastenbeschreibung



Bewegungs-LED

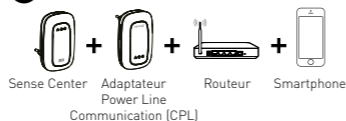
Pairing Taste

LED	Status	Beschreibung
Bewegungs-LED	Aus	Keine Detektion oder ausgeschaltet
	Blinkt (einmal in 1s)	Gerät mit neuer Zentrale verbinden
	Blinkt (3-mal in 1s)	Gerät mit gespeicherter Zentrale verbinden
Taste	Funktion	
Pairing Taste		Taste drücken, um das Gerät mit dem Netzwerk zu verbinden. Verbindung mit gespeicherter Zentrale, LED blinkt 3 mal pro s. Verbindung mit neuer Zentrale, LED blinkt 1 mal pro s. LED verlöscht, sobald das Gerät verbunden ist.

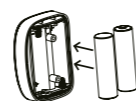
MAX HAURI AG
Weidstrasse 16
CH-9220 Bischofszell
www.maxhauri.ch



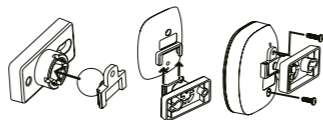
1 Voici tout ce dont vous avez besoin **2 Chargez 2 accus AA**



Sense Center Adaptateur Power Line Communication (CPL) Router Smartphone

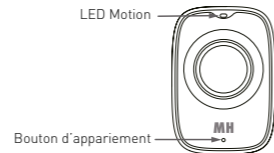


3 Posez le support de montage et vissez-le. **4 Appuyez sur le bouton Radio sur l'hôte.**



La liaison est effective quand la LED du maxSMART Motion Sense cesse de clignoter.

5 Description des LED et boutons



LED Motion

Bouton d'appariement

LED	État	Signification
LED Motion	Arrêt	Absence de détection ou appareil éteint
	Clignotant (1 fois en 1 s)	Ajouter l'appareil dans le nouvel hôte
	Clignotant (3 fois en 1 s)	Ajoutez l'appareil dans l'hôte mémorisé
Bouton	Fonction	
Bouton d'appariement		Appuyez sur le bouton pour ajouter l'appareil au réseau, ajout de l'appareil dans l'hôte en mémoire, la LED clignote 3 fois en 1 s ; ajout de l'appareil dans le nouvel hôte, la LED clignote 1 fois en 1 s. La LED s'éteint lorsque que l'ajout de l'appareil dans l'hôte a abouti.

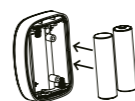
MAX HAURI AG
Weidstrasse 16
CH-9220 Bischofszell
www.maxhauri.ch



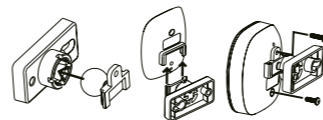
1 Tutto ciò che serve è **2 Caricare 2 celle AA**



Sense Center Adattatore PowerLAN Communication (PLC) Router Smartphone

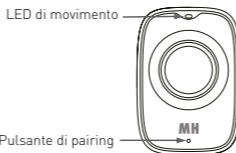


3 Montare la staffa e avvitare **4 Premere il pulsante Radio su host.**



Collegato quando il LED del maxSMART Motion Sense smette di lampeggiare.

5 Descrizioni dei LED e dei pulsanti



LED di movimento

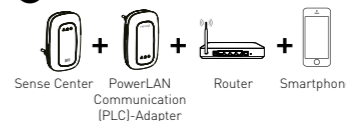
Pulsante di pairing

LED	Stato	Descrizione
LED di movimento	Off	Nessun rilevamento o spento
	Lampeggio (una volta in 1s)	Aggiungere il dispositivo nel nuovo host
	Lampeggio (3 volte in 1s)	Aggiungere i dispositivi nell'host memorizzato
Pulsante	Funzione	
Pulsantedi pairing		Premere il pulsante per aggiungere dispositivi alla rete, aggiungere dispositivo all'host memorizzato, il LED lampeggia 3 volte in 1 secondo, aggiungere dispositivo al nuovo host, il LED lampeggia una volta in 1 secondo, il LED verrà disattivato quando si aggiunge il dispositivo con successo.

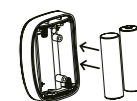
MAX HAURI AG
Weidstrasse 16
CH-9220 Bischofszell
www.maxhauri.ch



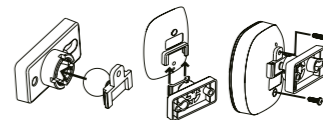
1 All you need is **2 Load 2 AA cells**



Sense Center PowerLAN Communication (PLC)-Adapter Router Smartphone

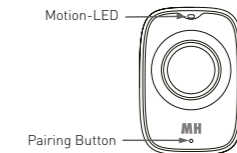


3 Mount the bracket and screw in on **4 Press the Radio button on host.**



Linked when the maxSMART Motion Sense LED stops flashing.

5 LED and Button Descriptions



Motion-LED

Pairing Button

LED	Status	Description
Motion LED	Off	Not triggered or switched off
	Blinking (once in 1s)	Add device to new host
	Blinking (3times in 1s)	Add device to memorized host
Button	Funktion	
Pairing Button		Press button to add device to the network. Add device to memorized host, LED flashes 3 times in 1 s. Add device to new host, LED flashes once in 1 s. LED will be deactivated when adding of device was successful.

MAX HAURI AG
Weidstrasse 16
CH-9220 Bischofszell
www.maxhauri.ch

